



**informant systems, inc.**

## SNMP Informant™

Product Information

---

**Release 2014.1**



**"GET more out of Windows!"**

**Windows SNMP support for  
industry standard Network  
Management Systems**

**[www.snmp-informant.com](http://www.snmp-informant.com)**

## Copyright

Copyright © 2004-2013 Informant Systems, Inc. All Rights Reserved.  
Copyright © 1999-2004 Williams Technology Consulting Services

## Restricted Rights Legend

This software and documentation is subject to and made available only pursuant to the terms of the Informant Systems License Agreement and may be used or copied only in accordance with the terms of that agreement. It is against the law to copy the software except as specifically allowed in the agreement. This document may not, in whole or in part, be copied photocopied, reproduced, translated, or reduced to any electronic medium or machine readable form without prior consent, in writing, from Informant Systems, Inc.

Information in this document is subject to change without notice and does not represent a commitment on the part of Informant Systems. THE SOFTWARE AND DOCUMENTATION ARE PROVIDED "AS IS" WITHOUT WARRANTY OF ANY KIND INCLUDING WITHOUT LIMITATION, ANY WARRANTY OF MERCHANTABILITY OR FITNESS FOR A PARTICULAR PURPOSE. FURTHER, INFORMANT SYSTEMS DOES NOT WARRANT, GUARANTEE, OR MAKE ANY REPRESENTATIONS REGARDING THE USE, OR THE RESULTS OF THE USE, OF THE SOFTWARE OR WRITTEN MATERIAL IN TERMS OF CORRECTNESS, ACCURACY, RELIABILITY, OR OTHERWISE.

Informant Systems, Inc. may make changes to specifications and product descriptions at any time, without notice.

## Trademarks or Service Marks

SNMP Informant is a registered trademark of Informant Systems, Inc. All other trademarks are the property of their respective companies.

## About Informant Systems, Inc.



### **Informant Systems, Inc.**

11135 - 23A Avenue  
Edmonton, AB T6J4W5 Canada  
Phone: 780-908-6669  
Fax: 780-434-8991  
Web: <http://www.informant-systems.com>

Product Information: [product.info@informant-systems.com](mailto:product.info@informant-systems.com)  
Product Support: [product.support@informant-systems.com](mailto:product.support@informant-systems.com)

## **Table of Contents**

<b>About Informant Systems, Inc.</b> .....	<b>i</b>
<b>Introduction</b> .....	<b>1</b>
<b>SNMP Informant Overview</b> .....	<b>1</b>
<b>Installation</b> .....	<b>2</b>
<b>Product Details</b> .....	<b>3</b>
<b>Provider Types</b> .....	<b>5</b>
<b>License Classes</b> .....	<b>7</b>

## **Table of Figures**

<b>Figure 1 – SNMP Informant Functional Overview</b> .....	<b>1</b>
<b>Figure 2 – SNMP Informant Unified Installer</b> .....	<b>2</b>
<b>Figure 3 – SNMP Informant Performance Provider</b> .....	<b>6</b>
<b>Figure 4 – SNMP Informant WMI Provider</b> .....	<b>7</b>

### **Document Information**

<b>Version</b>	<b>Last Updated</b>	<b>Author</b>	<b>Edit Notes</b>
1.0	January 29, 2009	GKW	Prepare document
2.0	May 15, 2010	GKW	Update document
3.0	February 27, 2016	GKW	Update to support current providers
4.0	September 12, 2014	GKW	Checked, updated.

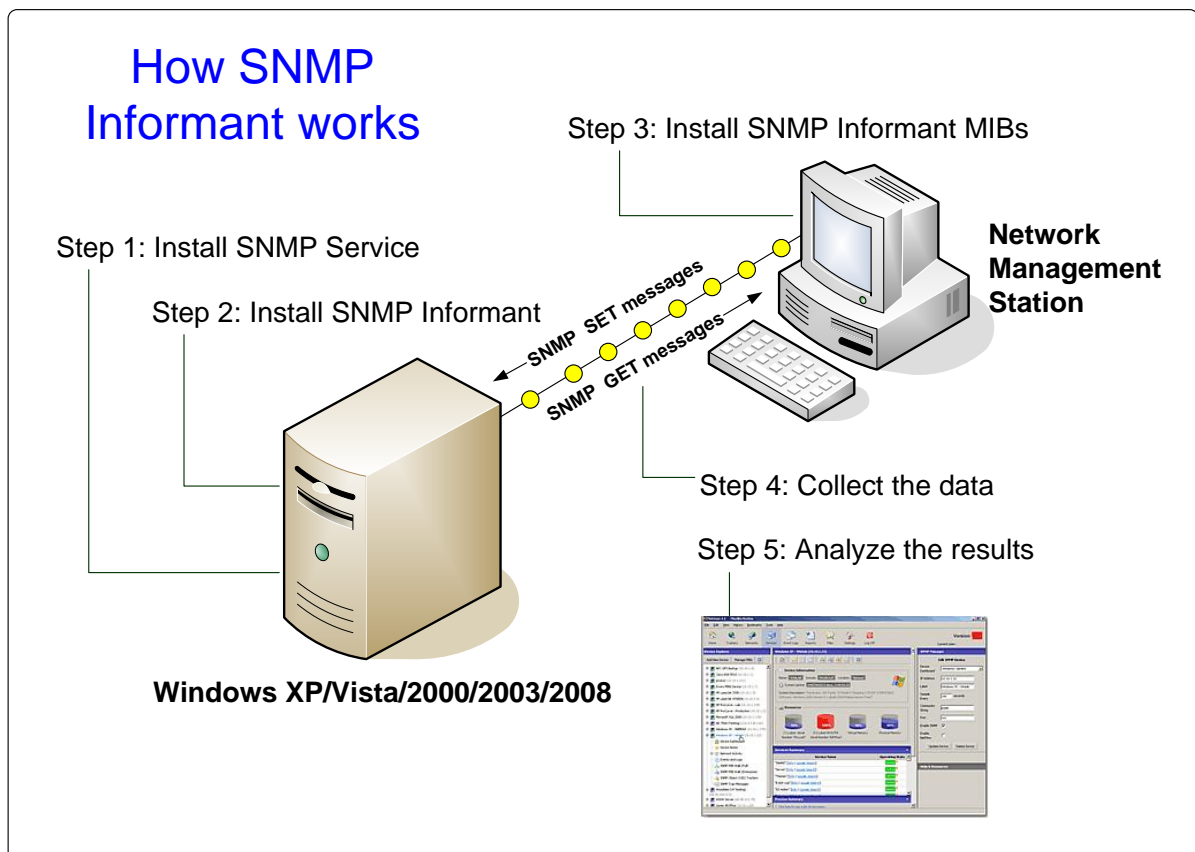
## Introduction

Thank you for your interest in SNMP Informant. This document is intended to help you understand the different SNMP Informant product offerings. If you have any comments about this document (omissions, corrections, etc.), please contact [product.support@informant-systems.com](mailto:product.support@informant-systems.com), and let us know. In order to get a true appreciation for what SNMP Informant can do for you, please download our 30 day, 2 server, fully-functional evaluation from [www.snmp-informant.com](http://www.snmp-informant.com).

## SNMP Informant Overview

SNMP Informant products are Simple Network Management Protocol (SNMP) extension agents that provide the capability to access Microsoft Windows Operating System and Application Server Performance Counters, WMI classes and other server information through the SNMP protocol. SNMP Informant agent information can be accessed using SNMPv1, SNMPv2 or SNMPv3 protocols from an SNMP Network Management System (NMS).

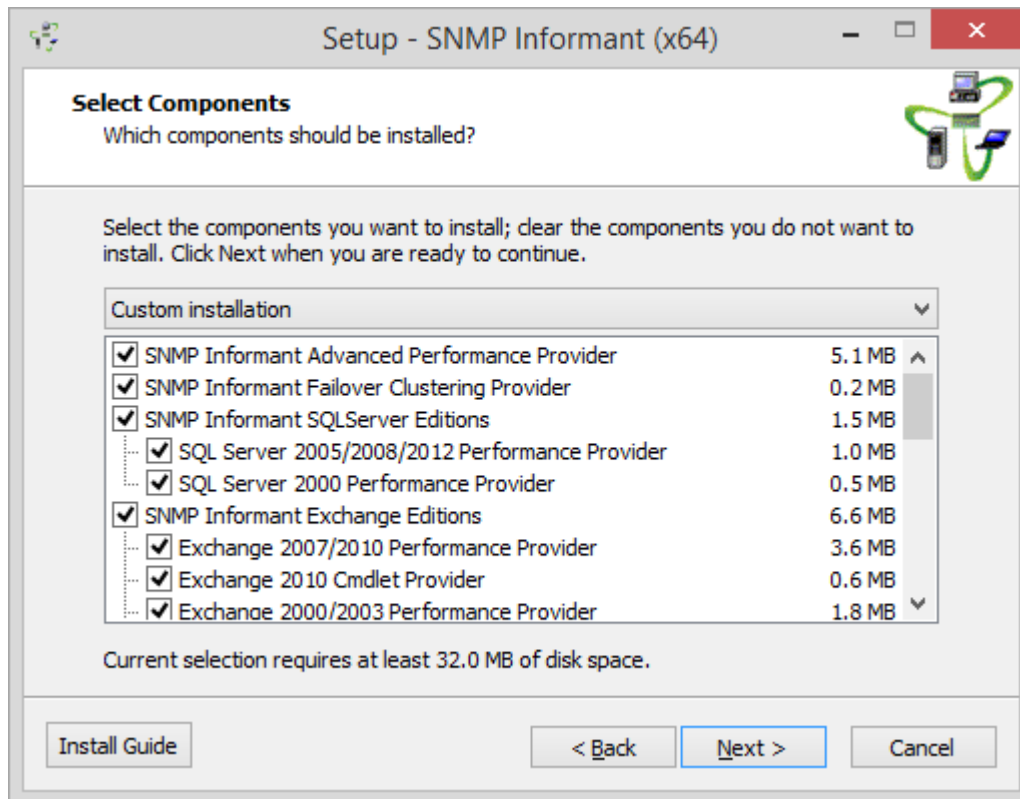
**Note:** In order to SNMP Informant to work with SNMPv3 commands, it required a 100% compatible SNMP service to replace the Windows SNMP service. The replacement service must be capable of supporting SNMP extension agents. For an example of such a service, see <http://www.ndt-inc.com/SNMP/AgentService.html>.



**Figure 1 – SNMP Informant Functional Overview**

# Installation

SNMP Informant is a unified installer that consists of 8 products with 20 providers. The installation program will automatically detect the operating system type (32bit or 64bit) and install the components you select. Depending on your monitoring requirements, you can choose the SNMP Informant product that's right for you!



**Figure 2 – SNMP Informant Unified Installer**

## Product Details

**Product:** SNMP Informant-Advanced

**Provider Type:** Performance

**Product Codes:** SI-ADV-SINGLE  
SI-ADV-SITE  
SI-ADV-ENT

**SNMP Informant-Advanced** is a Performance Provider that enables you to collect performance data from a variety of Windows Operating Systems, including:

- Windows XP
- Windows Vista
- Windows 7
- Windows Server 2003
- Windows Server 2008
- Windows Server 2012

**Note:** versions no longer supported by the vendor will no longer be supported by Informant Systems, Inc. for this product.

**Product:** SNMP Informant-SQL

**Provider Type:** Performance

**Product Codes:** SI-SQL-SINGLE  
SI-SQL-SITE  
SI-SQL-ENT

**SNMP Informant-SQL** is a Performance Provider that enables you to collect performance data from several versions of Microsoft SQL Server, including:

- SQL Server 2000
- SQL Server 2005
- SQL Server 2008
- SQL Server 2010
- SQL Server 2012

**Note:** versions no longer supported by the vendor will no longer be supported by Informant Systems, Inc. for this product.

**Product:** SNMP Informant-Exchange

**Provider Type:** Performance/WMI

**Product Codes:** SI-EXCH-SINGLE  
SI-EXCH-SITE  
SI-EXCH-ENT

**SNMP Informant-Exchange** consists of Performance and WMI Providers and enables you to collect performance and configuration/state information from several versions of Microsoft Exchange Server, including:

- Exchange Server 2000
- Exchange Server 2003
- Exchange Server 2007
- Exchange Server 2010

**Note:** versions no longer supported by the vendor will no longer be supported by Informant Systems, Inc. for this product.

**Product:** SNMP Informant-OS

**Provider Type:** WMI

**Product** SI-OS-SINGLE

**Codes:** SI-OS-SITE  
SI-OS-ENT

**SNMP Informant-OS** is a WMI Provider that enables you collect configuration and state information from several sub-systems of the following Microsoft Operating Systems:

- Windows XP
- Windows Vista
- Windows 7
- Windows Server 2000
- Windows Server 2003
- Windows Server 2008
- Windows Server 2012

Sub-systems supported include:

- OS (WMI) \*
- Hardware (WMI)
- Virtual Server (WMI)
- Hyper-V (Windows 2008/2008-R2)

*\* The OS (WMI) component of this product allows SNMP SET commands to control services, spawn remote processes and restart the monitored system.*

**Note:** versions no longer supported by the vendor will no longer be supported by Informant Systems, Inc. for this product.

**Product:** SNMP Informant-AppServer

**Provider Type:** Performance

**Product** SI-APP-SINGLE

**Codes:** SI-APP-SITE  
SI-APP-ENT

**SNMP Informant-AppServer** is a Performance Provider that enables you to collect performance data from Microsoft Application Servers, presently including:

- BizTalk Server 2000
- BizTalk Server 2004
- BizTalk Server 2006
- ISA Server 2000
- ISA Server 2004
- ISA Server 2006
- Forefront TMG 2010

**Note:** versions no longer supported by the vendor will no longer be supported by Informant Systems, Inc. for this product.

**Product:** SNMP Informant-Cluster

**Provider Type:** Server Specific

**Product** SI-CLUS-SINGLE

**Codes:** SI-CLUS-SITE  
SI-CLUS-ENT

**SNMP Informant-Cluster** is a Custom provider that enables you to collect failover system data from the following Microsoft server applications:

- Microsoft Cluster Server 2000
- Microsoft Cluster Server 2003
- Microsoft Cluster Server 2008
- Microsoft Cluster Server 2012

**Note:** versions no longer supported by the vendor will no longer be supported by Informant Systems, Inc. for this product.

**Product:** SNMP Informant-Citrix

**Provider Type:** Performance/WMI

**Product Codes:**

SI-CTX-SINGLE

SI-CTX-SITE

SI-CTX-ENT

**SNMP Informant-Citrix** is a set of Performance and WMI Providers that enable you to collect performance and operational/configuration information from the following Citrix applications:

- Citrix Presentation Server 4
- Citrix Presentation Server 5
- Citrix XenApp Server 6

**Note:** versions no longer supported by the vendor will no longer be supported by Informant Systems, Inc. for this product.

**Product:** SNMP Informant-Premium

**Provider Type:** Performance/WMI/Custom

**Product Codes:**

SI-PREM-SINGLE

SI-PREM-SITE

SI-PREM-ENT

**SNMP Informant-Premium** includes all 7 SNMP Informant products (from 15 different Providers), presently including:

- SNMP Informant-Advanced
- SNMP Informant-SQL
- SNMP Informant-Exchange
- SNMP Informant OS
- SNMP Informant AppServer
- SNMP Informant Cluster
- SNMP Informant Citrix
- *SNMP Informant Custom* \*\*

\*\* New in v2010.1 and **only** included as part of SNMP Informant-Premium, SNMP Informant-Custom let you define your own User Defined OIDs (UDO), and capture data from custom performance counters, scripts/executables and registry keys.

This product represents your best value for your network needs. SNMP Informant-Premium has it all! In a single installer, you get ALL the SNMP Informant agents, *in both 32 and 64 bit versions*. **One copy of SNMP Informant Premium is one copy of all 8 SNMP Informant products, and all 20 providers.**

You simply pick the agent(s) you need to install and away you go. And, like all our agents, this package can be silently installed, making it deployable using a tool such as SMS™!

## Provider Types

A "Provider" is a term that describes where SNMP Informant gets its data. There are "Performance", "WMI" and "Custom" provider types.

### Provider Type: Performance

SNMP Informant Performance providers connect into the Windows Performance Monitor subsystem through the MS Performance Data Helper API, and make Windows Performance Counter objects available as SNMP OIDs. The [Performance Data Helper \(PDH\)](#) library is an [API](#) provided by Microsoft to retrieve real-time performance information from system and application performance counters exposed to the Performance Monitor applet. See Figure 1.



## Provider Type: WMI

SNMP Informant WMI providers interface with the [Windows Management Instrumentation \(WMI\)](#) subsystems of the server upon which they are installed, and convert system, state and operational data into SNMP OIDs. *These agents are primarily operational in nature* (although some performance information can be captured from them). See Figure 2.

## Provider Type: Server Specific

Server Specific SNMP Informant providers do not connect to either the performance or WMI subsystems of a server. Rather they connect to a server "connectivity" program (called a DLL), which allows SNMP Informant to collect data about that server.

- The [MSCS Provider](#) connects into the Cluster Servers resource libraries to allow accesses to Cluster Service operational and state information.

## Provider Type: Custom

SNMP Informant-Custom lets you define your own User Defined OIDs (UDO), and capture data from custom performance counters, scripts/executable programs and registry keys.

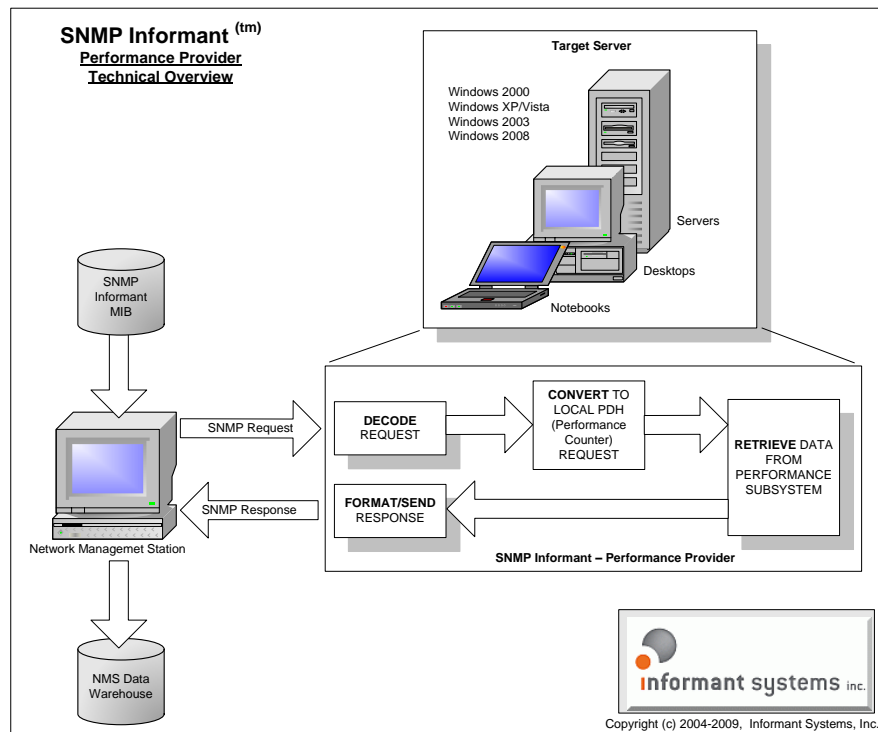
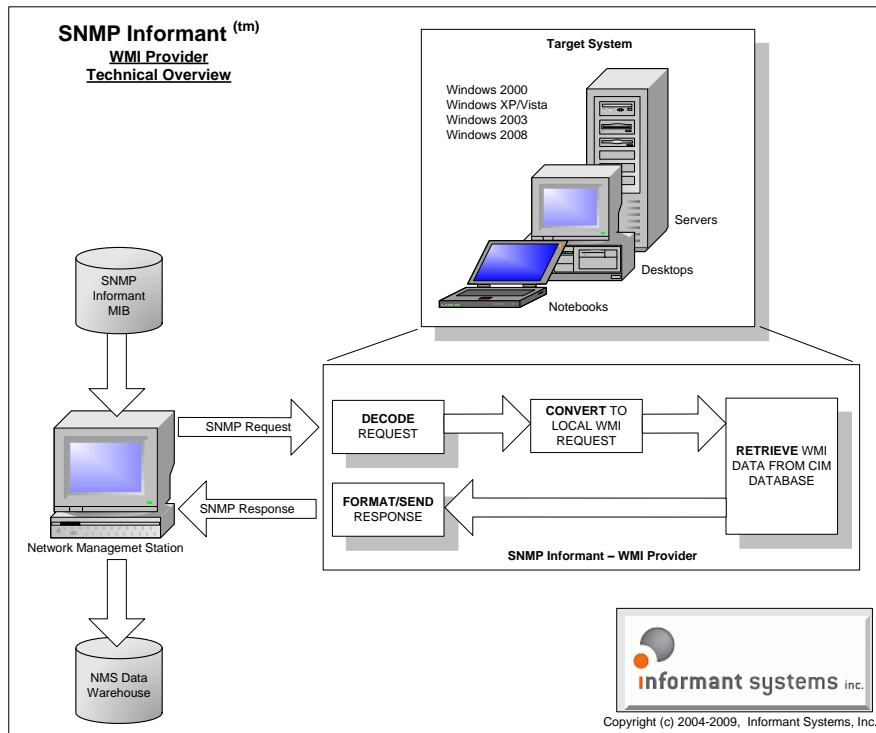


Figure 3 – SNMP Informant Performance Provider



**Figure 4 – SNMP Informant WMI Provider**

## License Classes

You can purchase Single, Site or Enterprise licenses of SNMP Informant depending on your needs. The differences are as follows:

- **Single License:** A license to use SNMP Informant on a single system. You can uninstall SNMP Informant from one system and re-install it on another system if you like.
- **Site License:** A license to use as many copies of SNMP Informant in a single company/organization at a single location.
- **Enterprise License:** A license to use as many copies of SNMP in a single company/organization at as many locations as required.

---

**End of Document**